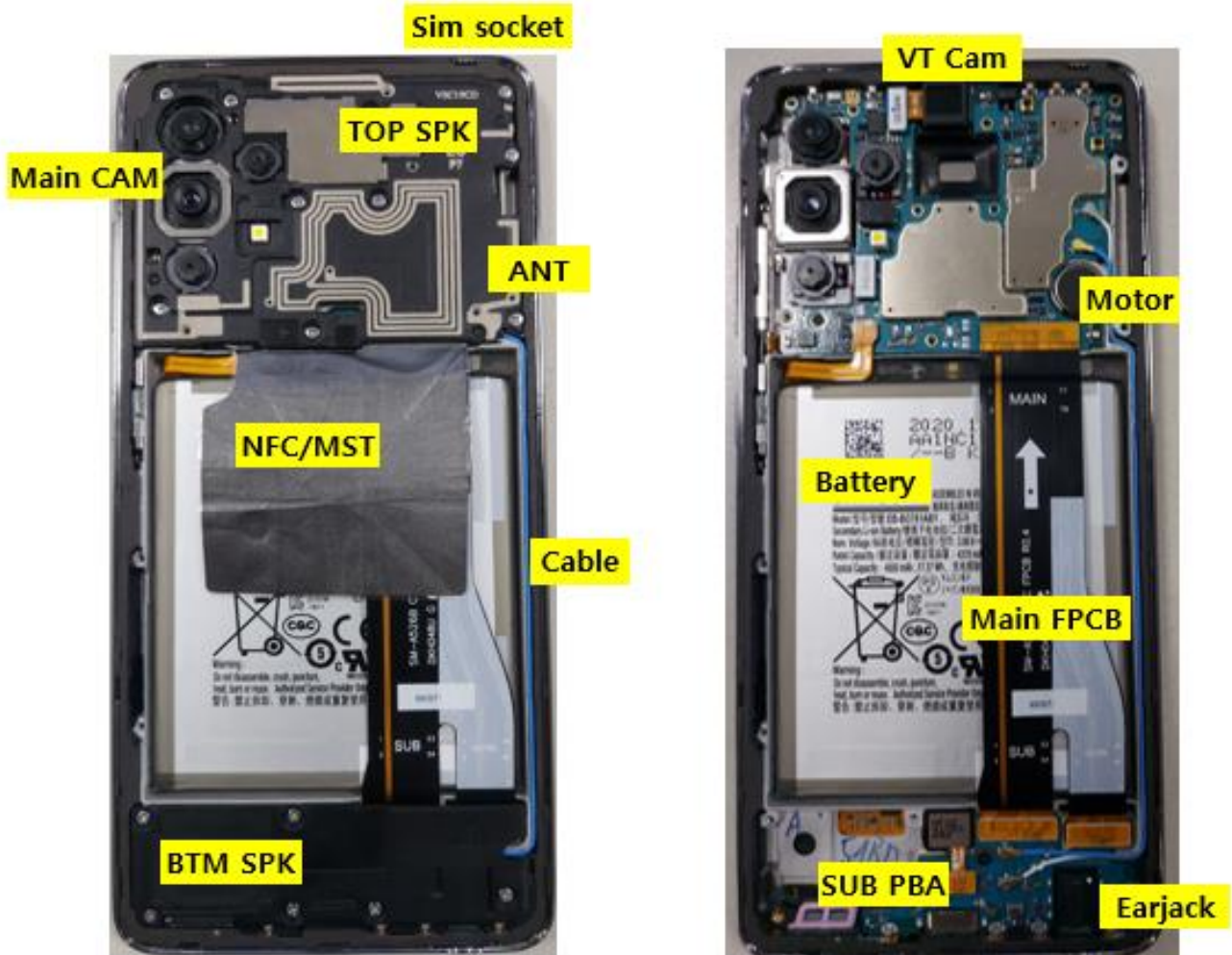

7. Level 2 Repair

7-1. Components on the Rear Case




7. Level 2 Repair

7-2. Pre-requisite

	
Tweezers / Disass'y Stick / Screw Driver	Anti-static Gloves
	
Anti-static Mat	AOD
	
Ethyl Alcohol	Cotton Swab





7. Level 2 Repair

7-3. Parts which must be changed after repair

BOM description & part code	Image	Remarks
TAPE WP BACKCOVER [GH02-22419A]		Replace for Back Cover repair

7. Level 2 Repair

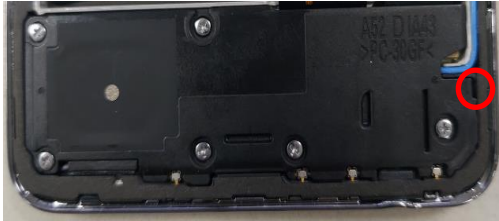
7-4. Disassembly

<div data-bbox="119 302 199 369">1</div> <div data-bbox="231 313 718 504"><p>Put the device in the chamber as following below heating condition.</p><ul style="list-style-type: none">- SOC 68%↓: 70℃/10~20 minute- SOC 68%↑: 70℃/10~20 minute<p>※ Please confirm the heating condition released lastly, and follow it.</p></div> <div data-bbox="239 526 638 1008"></div>	<div data-bbox="821 302 901 369">2</div> <div data-bbox="933 313 1476 380"><p>Detach the Back Glass. Detach the left side of Back glass.</p></div> <div data-bbox="1013 448 1292 1008"></div>
<p>※ Caution Be care of scratch</p>	<p>※ Caution Be care of scratch</p>
<div data-bbox="119 1153 199 1220">3</div> <div data-bbox="231 1164 758 1254"><p>Unscrew 16 Point and disassemble SIM Tray from device</p></div> <div data-bbox="159 1276 630 1780"></div>	<div data-bbox="821 1142 901 1209">4</div> <div data-bbox="933 1153 1476 1265"><p>Disassemble Upper Rear. (Use disassemble hole, left side of Rear to detach it)</p></div> <div data-bbox="901 1288 1404 1680"></div> <div data-bbox="933 1713 1412 1780"><p>Rear Top disassemble hole.</p></div>
<p>※ Caution Be care of Rear damage.</p>	<p>※ Caution</p> <ol style="list-style-type: none">1) Be care of scratch.2) Be care of Rear and connector damage.

7. Level 2 Repair

5

Finally Disassemble Rear of bottom side.
(Use disassemble hole, right side of Rear to detach it)



Rear Top disassemble hole.

※ Caution

- 1) Be care not to damage Battery.
- 2) Be care not to damage Rear, Connectors, PBA.
- 3) Be careful of scratch.

6

Unscrew Main PBA 1 point.

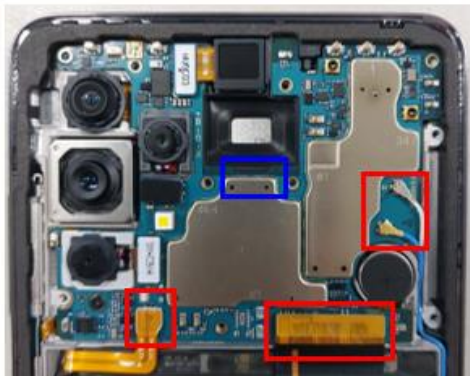


※ Caution

Be careful not to damage the Main PBA and components.

7

Disassemble 2 point connectors and 2 point cables of PBA and detach PBA



Main PBA disassemble hole (blue area)

※ Caution

- 1) Be care of scratch.
- 2) Be care of connector damage.

8

Unscrew Sub PBA 1 point



※ Caution

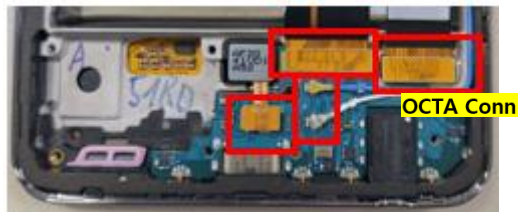
Be careful not to damage the Sub PBA and components.

7. Level 2 Repair

9

Disassemble 3 point connectors and 2 point cables of Sub PBA and detach Sub PBA.

- Detach Finger sensor module
- Detach Sub PBA



10

Detach other components.



※ Caution

Be care of Ear jack connector.

※ Caution

Be care of SUB PBA damage.

7. Level 2 Repair

7-5. Assembly

1

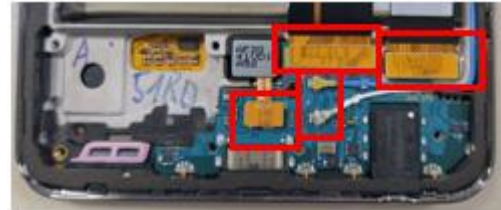
Attach components on Front.
(RCV module, Motor, Battery)



2

Attach SUB PBA and Finger sensor module on Front.

Attach OCTA conn, Finger sensor conn, Main Fpcb conn, and Cables.



※ Caution

- 1) Be care of FPCB damage and tilt.
- 2) Be care of press power/time.

※ Caution

Be care of FPCB and PBA damage.

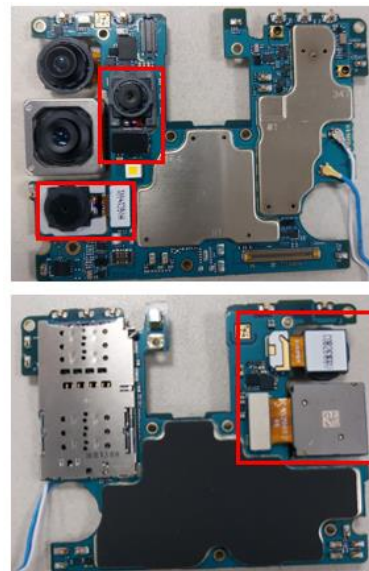
3

Screw 1 point on Sub PBA.
* Torque Value : $1.1\text{kgf} \pm 7\%$



4

Attach Main Cam on PBA.



※ Caution

Be care of chip damage nearby screw point.

※ Caution

Be care of press power/time.

7. Level 2 Repair

5

1. Assemble PBA to Front case, and screw 1 point on PBA (* Torque Value : $1.1\text{kgf} \pm 7\%$)
2. Attach and assemble 2 coaxial cables on the right side of front
3. Attach VT cam and connect connectors and cables. (Battery conn, MAIN FPCB conn, 2 coaxial cables)



6

Assemble the Bottom REAR in sequence of bottom part first and top part last.



※ Caution

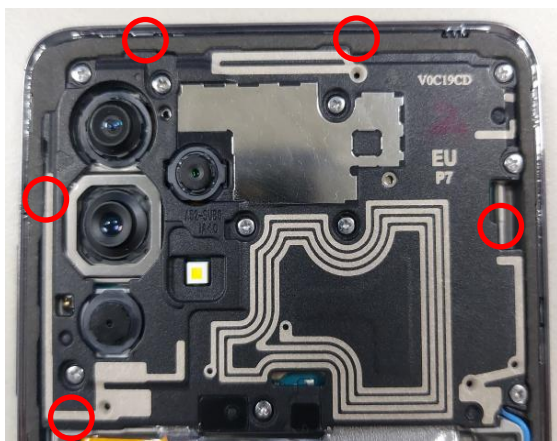
- 1) Be care of scratch.
- 2) Assemble White cable first and blue cable later.
- 3) Be care of coaxial cables damage.
- 4) Be care of PBA and Fpcb damage.

※ Caution

- 1) Assemble bottom hook of Rear Bottom first, and then side hooks later.
- 2) Be care of scratch and Sub PBA damage.

7

Assemble the TOP REAR Assy.



8

Screw insertion 16 Point.

* Torque Value

- 10 points on Rear Top : $1.3\text{kgf} \pm 7\%$
- 6 points on Rear Btm : $1.2\text{kgf} \pm 7\%$



※ Caution

- 1) Assemble top hooks of Rear Top first, and then right side hook and left side hooks later.
- 2) Be care of scratch and Main PBA damage.

※ Caution

Be care of Rear damage.

7. Level 2 Repair

9

Attach the back cover outside tape on the back cover by hands.

Gently press all adhesive parts of tape using disassembly stick or hands.



□ **Caution**

Fit the tapes precisely to the inner area of back cover.
Don't touch the attach side of tape for waterproof.

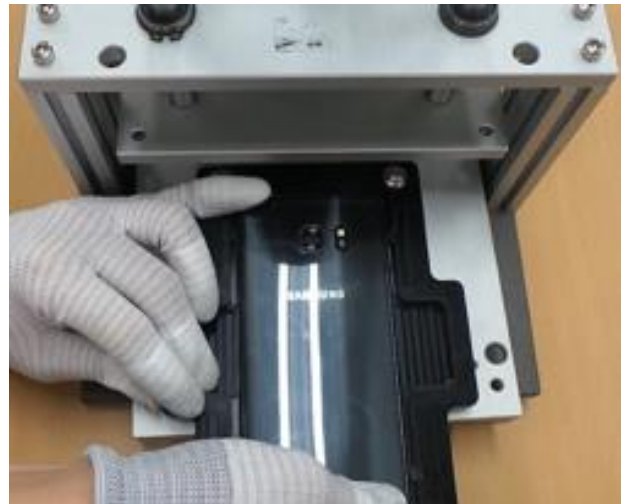
10

Press Back Glass.

- Pressing force : 1 N

- Pressing time : 60 Sec.

SIM Tray must be separated before pressing the backglass or the OCTA



※ **Caution**

Be care of scratch and tilt.